

CALLISTO MIX

Design C. Ballabio

TAVOLINO | COFFEE TABLE

2023



CALLISTO MIX

Design C. Ballabio

TAVOLINO | COFFEE TABLE

2023

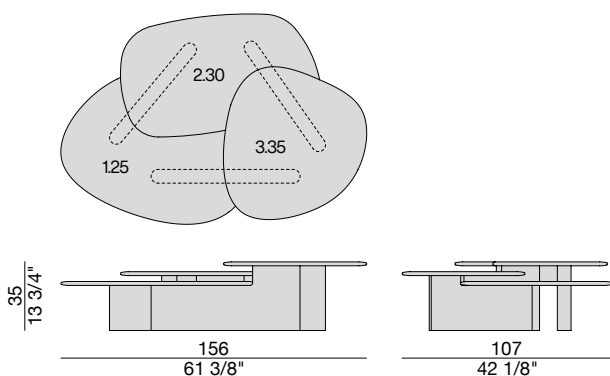
Tavolino composto da una base in legno laccato opaco poro chiuso finitura Bronzoro e tre piani di dimensioni differenti. Possibilità di combinare piani in legno e in marmo in diverse finiture o in un'unica finitura. In caso di finiture diverse, è necessario indicare la posizione (1,25 - 2,30 - 3,35) per ognuna di esse (vedi disegno).

Coffee table with Bronzoro matt lacquered closed pore wooden base and three tops of different sizes. It is possible to combine wooden and marble tops in different finishes or in one single finish. In case of different finishes, it is compulsory to indicate the position (1,25 - 2,30 - 3,35) of each one of them (see drawing).

Coufisch mit Untergestell aus matt lackiertem, geschlossporigem Bronzoro-Holz in verschiedenen Größen. Es besteht die Möglichkeit, Holz- und Marmorplatten, drei Holzplatten in verschiedenen Ausführungen oder in einer einzigen Ausführung zu kombinieren. Bei unterschiedlichen Ausführungen muss die Position (1,25 - 2,30 - 3,35) für jede dieser Ausführungen angegeben werden (siehe Zeichnung).

Table basse avec base en bois laqué mat pore fermé en finition Bronzoro dans différentes tailles. Possibilité de combiner plateaux en bois et en marbre, trois plateaux en bois dans finitions différentes ou dans une seule finition. En cas de finitions différentes, il faut indiquer la position (1,25 - 2,30 - 3,35) pour chacune (voir dessin).

Mesa de centro con una base de madera lacada mate poro cerrado en acabado Bronzoro de dimensiones diferentes. Posibilidad de combinar tapas de madera y mármol, tres tapas de madera en diferentes acabados o en un único acabado. En el caso de acabados diferentes, es necesario indicar la posición (1,25 - 2,30 - 3,35) para cada uno de ellos (ver dibujo).



CALLISTO MIX

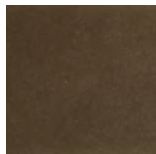
Design C. Ballabio

TAVOLINO | COFFEE TABLE

2023

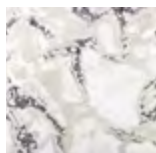


Laccato opaco poro chiuso | *Matt Lacquered closed pore*



Bronzoro
Bronzoro

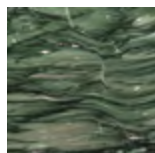
Marmo | *Marble*



Dover white
Dover white



Roma Imperiale
Imperial Rome

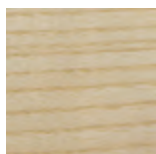


Verde Lapponia
Lapponia green



Grigio Carnico
grey Carnico

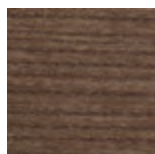
Essenze | *Wood*



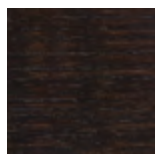
Frassino naturale
Natural ash



Frassino
tinto canapa
Ash canapa stained



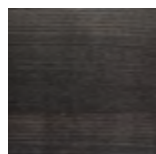
Frassino
tinto noce canaletta
Ash canaletta walnut
stained



Frassino
tinto moka
Ash moka stained

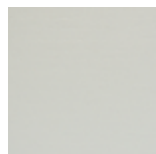


Frassino
tinto wengè
Ash wengè stained



Frassino
tinto grigio
Ash grey stained

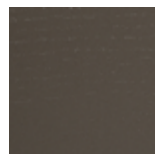
Laccato opaco poro aperto | *Matt Lacquered open pore*



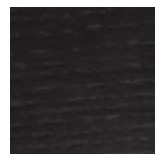
Bianco
White
(RAL 9016)



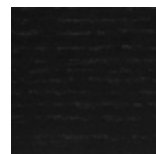
Avorio
Ivory
(RAL 1013)



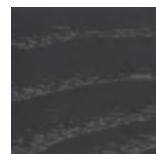
Argilla
Argilla
(RAL 7006)



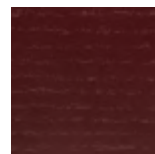
Cioccolato
Chocolate
(RAL 8019)



Nero
Black
(RAL 9005)



Iron
Iron
(RAL 7011)



Granata
Granata
(NCS S4050Y90R)