

# CONNIE

Design C. Ballabio

SEDIA | CHAIR

2015



# CONNIE

Design C. Ballabio

SEDIA | CHAIR

2015

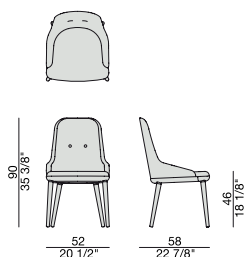
Sedia con struttura in massello di noce canaletta o frassino e rivestimento nei tessuti della collezione. Possibilità di ordinare schienale e bottoni tono su tono o in contrasto.

*Chair with frame in solid canaletta walnut or ash and cover in the fabrics of the collection. The back and the buttons could be ton sur ton or in contrast.*

*Stuhl mit Gestell aus massivem Nussbaum Canaletta oder Esche und Bezug in den Stoffen der Kollektion. Mit der Möglichkeit die Rück und Knöpfen im selben Stoff oder im Kontraststoff zu machen.*

*Chaise avec structure en noyer canaletta massif ou frêne et revêtement dans les tissus de la collection. Le dossier et les boutons peuvent être ton sur ton ou en contraste.*

*Silla con estructura en nogal canaletta o fresno macizo y revestimiento en las telas de la colección. Respaldo y botones en la misma tela del asiento o en contraste.*



# CONNIE CON BRACCIOLI

Design C. Ballabio

SEDIA | CHAIR

2015

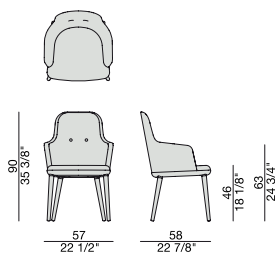
Sedia con braccioli con struttura in massello di noce canaletta o frassino e rivestimento nei tessuti della collezione. Possibilità di ordinare schienale e bottoni tono su tono o in contrasto.

Chair with arms with frame in canaletta walnut or ash and seat covered in the fabrics of the collection. The buttons could be ton sur ton or in contrast.

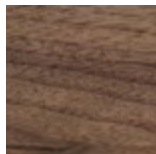
Stuhl mit Lehnen mit Gestell aus massivem Nussbaum Canaletta oder Esche und Bezug in den Stoffen der Kollektion. Mit der Möglichkeit die Knöpfen im selben Stoff oder im Kontraststoff zu machen.

Chaise avec accoudoirs avec structure en noyer canaletta ou frêne massif et siège revêtu dans les tissus de la collection. Les boutons peuvent être ton sur ton ou en contraste.

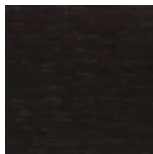
Silla con brazos con estructura en nogal canaletta o fresno macizo y asiento revestido en las telas de la colección. Botones en la misma tela del asiento o en contraste.



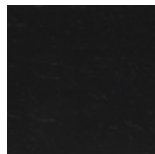
Essenze | Wood



Noce canaletta  
Canaletta walnut

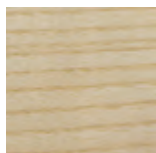


Noce canaletta  
tinto moka  
Canaletta walnut  
moka stained



Noce canaletta  
tinto wengè  
Canaletta walnut  
wengè stained

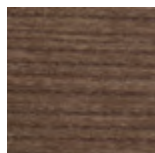
Essenze | Wood



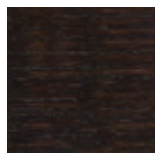
Frassino naturale  
Natural ash



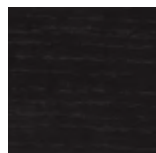
Frassino  
tinto canapa  
Ash canapa stained



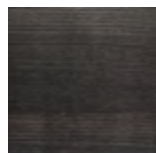
Frassino  
tinto noce canaletta  
Ash canaletta walnut  
stained



Frassino  
tinto moka  
Ash moka stained



Frassino  
tinto wengè  
Ash wengè stained



Frassino  
tinto grigio  
Ash grey stained

Laccato opaco poro chiuso | Matt Lacquered closed pore



Bianco  
White  
(RAL 9016)



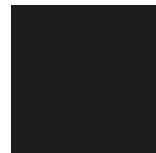
Avorio  
Ivory  
(RAL 1013)



Argilla  
Argilla  
(RAL 7006)



Cioccolato  
Chocolate  
(RAL 8019)



Nero  
Black  
(RAL 9005)

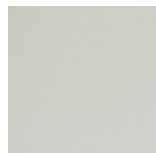


Iron  
Iron  
(RAL 7011)



Granata  
Granata  
(NCS S4050Y90R)

Laccato opaco poro aperto | Matt Lacquered open pore



Bianco  
White  
(RAL 9016)



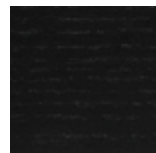
Avorio  
Ivory  
(RAL 1013)



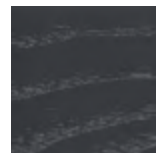
Argilla  
Argilla  
(RAL 7006)



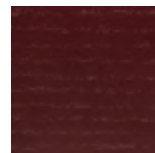
Cioccolato  
Chocolate  
(RAL 8019)



Nero  
Black  
(RAL 9005)



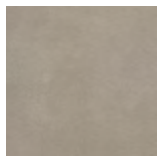
Iron  
Iron  
(RAL 7011)



Granata  
Granata  
(NCS S4050Y90R)

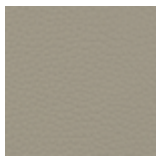
## Pelle | Leather

Cat. LUX



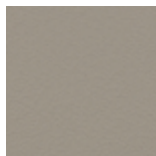
Nabuk

Cat. PLUS



Pelle PLUS

Cat. EXTRA



Pelle EXTRA

Cat. PELLE



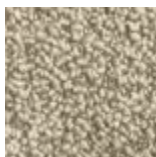
Pelle

## Rivestimento | Cover

Cat. A



Twist



Zante

Cat. B



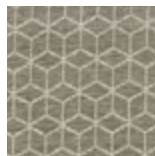
Bouclage



Motley



Tammy



Rabat

Cat. C



Armam



Ikat



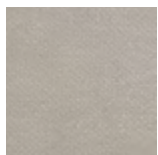
Lint



Loom



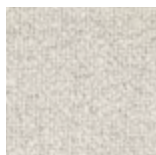
Madras



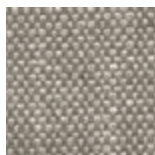
Moleskin



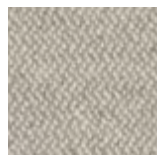
Moran



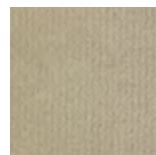
Patch



Silesia

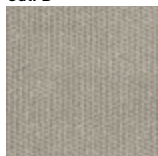


Serge



Velvet

Cat. D

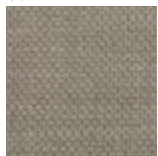


Range

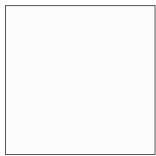


Tress

Cat. E



Dorian



In Bianco/Calico

Cat. COM

Disponibile con tessuto fornito dal cliente.

Available with fabric supplied by the customer.

Verfügbar mit Kundenstoff.

Disponibile avec tissu du client.

Disponibile con tela suministrada por el cliente.