

COPINE WOOD

Design G. & O. Buratti

POLTRONA | ARMCHAIR

2020



COPINE WOOD

Design G. & O. Buratti

POLTRONA | ARMCHAIR

2020

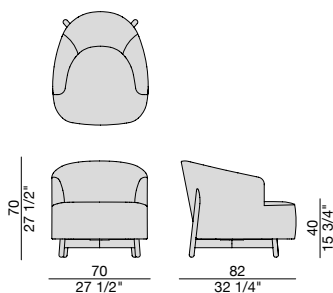
Poltrona con struttura basamento in massello di noce canaletta e rivestimento nei tessuti della collezione. Rivestimento sfoderabile in tessuto e non sfoderabile in pelle. Possibilità di combinare diversi tessuti per la struttura imbottita interna ed esterna. Scocca interna in multistrato di pioppo e massello di abete con sedile cinghiato. Imbottitura in poliuretano a quote differenziate.

Armchair with frame in solid canaletta walnut and cover in the fabrics of the collection. The cover in fabric is removable, while the cover in leather is non-removable. It is possible to combine different fabrics for the outer and inner parts of the upholstered structure. Inner shell in poplar plywood and solid fir wood with belted seat. The padding is in crush-proof polyurethane with different densities.

Sessel mit Gestell aus massivem Nussbaum canaletta. Bezüge in den Stoffen aus der Kollektion. Der Bezug aus Stoff ist abziehbar, während Bezüge aus Leder festbetzoigen sind. Es besteht die Möglichkeit unterschiedliche Bezüge für die äussere und innere Polsterstruktur zu kombinieren. Die Sitzschale wird aus massivem Tannenholz, Pappelholz und Polstergurten gefertigt. Die Struktur wird mit unverformbaren Polyurethanschaum in unterschiedlichen Dichten abgepolstert.

Fauteuil avec structure en noyer canaletta massif et revêtement déhoussable dans les tissus de la collection, mais fixe dans la version en cuir. Possibilité de combiner tissus différents pour la partie intérieure et extérieure de la structure rembourrée. Coque intérieure en peuplier contreplaqué et sapin massif et siège avec sangles. Rembourrage en polyuréthane à densité différenciée.

Butaca con estructura de nogal canaletta y revestimiento desenfundable en las telas de la colección y no desenfundable en piel. Es posible combinar diferentes telas para la parte frontal del respaldo y el asiento y para la parte trasera del respaldo y la parte baja de la estructura. Estructura interna en contrachapado de abedul y abeto macizo, con asiento con correas. Relleno de poliuretano expandido de densidades diferenciadas.



Essenze | Wood



Noce canaletta
Canaletta walnut

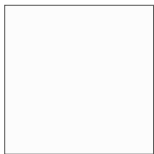


Noce canaletta
tinto moka
Canaletta walnut
moka stained



Noce canaletta
tinto wengè
Canaletta walnut
wengè stained

Laccato opaco poro chiuso | Matt Lacquered closed pore



Bianco
White
(RAL 9016)



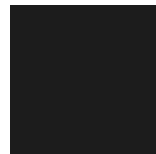
Avorio
Ivory
(RAL 1013)



Argilla
Argilla
(RAL 7006)



Cioccolato
Chocolate
(RAL 8019)



Nero
Black
(RAL 9005)



Iron
Iron
(RAL 7011)



Granata
Granata
(NCS S4050Y90R)

COPINE WOOD

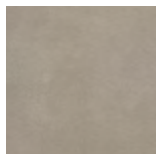
Design G. & O. Buratti

POLTRONA | ARMCHAIR

2020

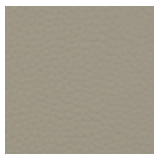
Pelle | Leather

Cat. LUX



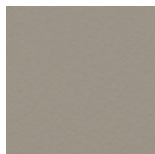
Nabuk

Cat. PLUS



Pelle PLUS

Cat. EXTRA



Pelle EXTRA

Cat. PELLE



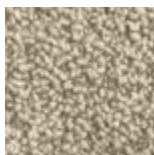
Pelle

Rivestimento | Cover

Cat. A

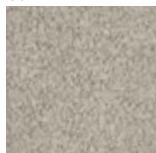


Twist

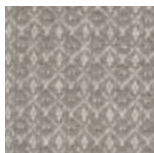


Zante

Cat. B



Bouclage



Motley



Tammy



Rabat

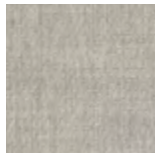
Cat. C



Armam



Ikat



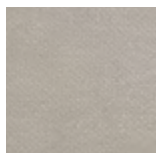
Lint



Loom



Madras



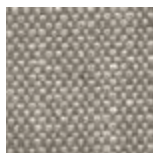
Moleskin



Moran



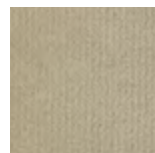
Patch



Silesia

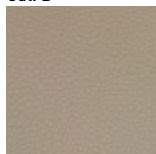


Serge

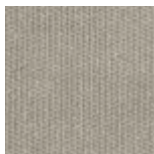


Velvet

Cat. D



Paros
eco leather



Range

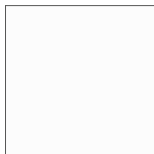


Tress

Cat. E



Dorian



In Bianco/Calico

Cat. COM

Disponibile con tessuto fornito dal cliente.

Available with fabric supplied by the customer.

Verfügbar mit Kundenstoff.

Disponibile avec tissu du client.

Disponibile con tela suministrada por el cliente.

COPINE STEEL

Design G. & O. Buratti

POLTRONA | ARMCHAIR

2020



COPINE STEEL

Design G. & O. Buratti

POLTRONA | ARMCHAIR

2020

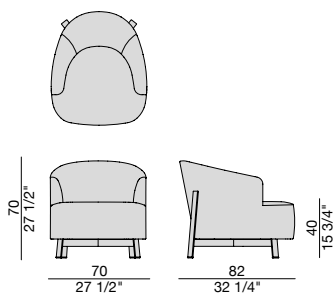
Poltrona con struttura basamento metallico in nichel nero o ottone bronzato spazzolato e rivestimento nei tessuti della collezione. Rivestimento sfoderabile in tessuto e non sfoderabile in pelle. Possibilità di combinare diversi tessuti per la struttura imbottita interna ed esterna. Scocca interna in multistrato di pioppo e massello di abete con sedile cinghiato. Imbottitura in poliuretano a quote differenziate.

Armchair with metal frame in black nickel or brushed bronzed brass finish and cover in the fabrics of the collection. The cover in fabric is removable, while the cover in leather is non-removable. It is possible to combine different fabrics for the outer and inner parts of the upholstered structure. Inner shell in poplar plywood and solid fir wood with belted seat. The padding is in crush-proof polyurethane with different densities.

Sessel mit Gestell aus Metall, verfügbar in den Ausführungen Nickel schwarz, oder bronziertem, gebürstetem Messing. Bezüge in den Stoffen aus der Kollektion. Der Bezug aus Stoff ist abziehbar, während Bezüge aus Leder festbetzoigen sind. Es besteht die Möglichkeit unterschiedliche Bezüge für die äussere und innere Polsterstruktur zu kombinieren. Die Sitzschale wird aus massivem Tannenholz, Pappelholz und Polstergurten gefertigt. Die Struktur wird mit unverformbaren Polyurethanschaum in unterschiedlichen Dichten abgepolstert.

Fauteuil avec structure en métal nickel noir ou laiton bronzé brossé. Revêtement déhoussable dans les tissus de la collection, mais fixe dans la version en cuir. Possibilité de combiner tissus différents pour la partie intérieure et extérieure de la structure rembourrée. Coque intérieure en peuplier contreplaqué et sapin massif et siège avec sangles. Rembourrage en polyuréthane à densité différenciée.

Butaca con estructura en metal en acabado níquel negro o latón bronceado cepillado y revestimiento desenfundable en las telas de la colección y no desenfundable en piel. Es posible combinar diferentes telas para la parte frontal del respaldo y el asiento y para la parte trasera del respaldo y la parte baja de la estructura. Estructura interna en contrachapado de abedul y abeto macizo, con asiento con correas. Relleno de poliuretano expandido de densidades diferenciadas.



COPINE STEEL

Design G. & O. Buratti

POLTRONA | ARMCHAIR

2020



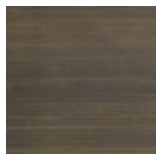
COPINE STEEL

Design G. & O. Buratti

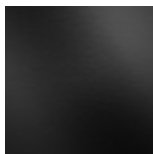
POLTRONA | ARMCHAIR

2020

Metallo | Metal



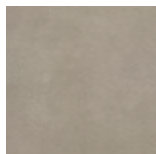
Ottone bronzato
spazzolato
Brushed bronzed brass



Nichel nero
Black nickel

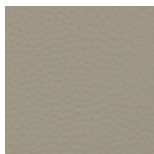
Pelle | Leather

Cat. LUX



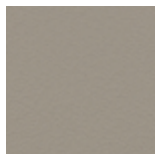
Nabuk

Cat. PLUS



Pelle PLUS

Cat. EXTRA



Pelle EXTRA

Cat. PELLE



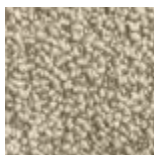
Pelle

Rivestimento | Cover

Cat. A



Twist

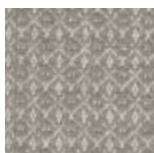


Zante

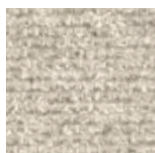
Cat. B



Bouclage



Motley

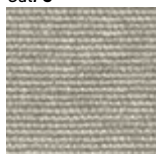


Tammy

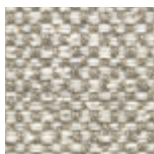


Rabat

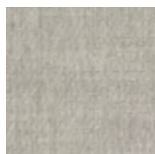
Cat. C



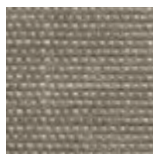
Armam



Ikat



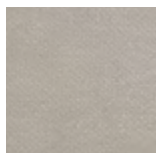
Lint



Loom



Madras



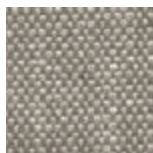
Moleskin



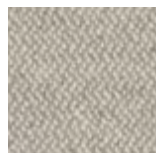
Moran



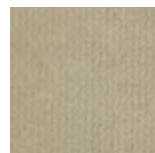
Patch



Silesia

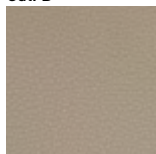


Serge

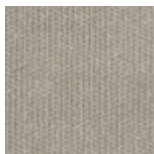


Velvet

Cat. D



Paros
eco leather



Range

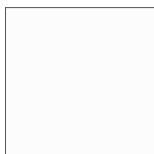


Tress

Cat. E



Dorian



In Bianco/Calico

Cat. COM

Disponibile con tessuto fornito dal cliente.
Available with fabric supplied by the customer.
Verfügbar mit Kundenstoff.
Disponibile avec tissu du client.
Disponibile con tela suministrada por el cliente.