

# WENDY CORNER

Design C. Ballabio

POLTRONA | ARMCHAIR

2016



# WENDY CORNER

Design C. Ballabio

POLTRONA | ARMCHAIR

2016

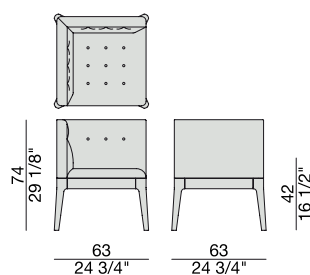
Poltroncina angolare con struttura in massello di noce canaletta e seduta con lavorazione capitonné nei tessuti della collezione. Possibilità di combinare tessuti diversi per seduta e schienale e di ordinare i bottoni tono su tono o in contrasto.

Corner easy chair with frame in solid canaletta walnut and seat with capitonné decoration upholstered in the fabric of the collection. It is possible to combine different fabrics for seat and back and to purchase the buttons ton sur ton or in contrast.

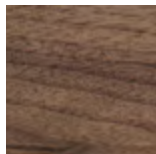
Eckenarmlehnstuhl mit Gestell aus massivem Nussbaum Canaletta und Sitz mit Capitonné in den Stoffen der Kollektion. Mit der Möglichkeit den selben oder verschiedene Stoffe fuer die Sitz- und Rückenissen zu wählen. Auch die Knöpfe können Ton in Ton oder in einem anderen Stoff gewählt werden.

Petite fauteuil à angle avec structure en noyer canaletta massif et assise avec capitonné dans les tissus de la collection. Possibilité de combiner tissus différents entre assise et dossier. Les boutons peuvent être ton sur ton ou en contraste.

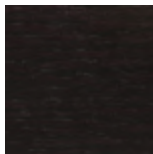
Butaquita angular con estructura en nogal canaletta macizo y asiento con decoración capitoné en las telas de la colección. Posibilidad de combinar telas diferentes entre asiento y respaldo y de pedir los botones tono sobre tono o en contraste.



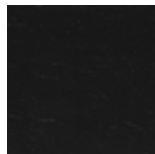
## Essenze | Wood



Noce canaletta  
Canaletta walnut

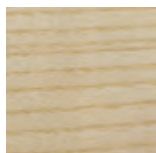


Noce canaletta  
tinto moka  
Canaletta walnut  
moka stained



Noce canaletta  
tinto wengè  
Canaletta walnut  
wengè stained

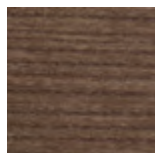
## Essenze | Wood



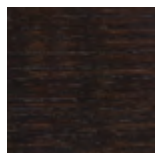
Frassino naturale  
Natural ash



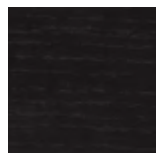
Frassino  
tinto canapa  
Ash canapa stained



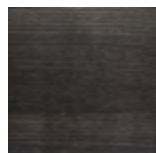
Frassino  
tinto noce canaletta  
Ash canaletta walnut  
stained



Frassino  
tinto moka  
Ash moka stained

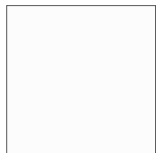


Frassino  
tinto wengè  
Ash wengè stained

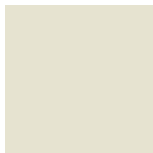


Frassino  
tinto grigio  
Ash grey stained

## Laccato opaco poro chiuso | Matt Lacquered closed pore



Bianco  
White  
(RAL 9016)



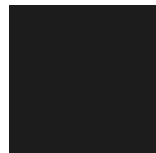
Avorio  
Ivory  
(RAL 1013)



Argilla  
Argilla  
(RAL 7006)



Cioccolato  
Chocolate  
(RAL 8019)



Nero  
Black  
(RAL 9005)

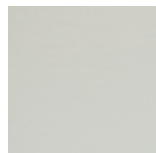


Iron  
Iron  
(RAL 7011)



Granata  
Granata  
(NCS S4050Y90R)

## Laccato opaco poro aperto | Matt Lacquered open pore



Bianco  
White  
(RAL 9016)



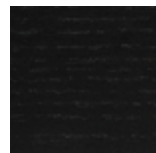
Avorio  
Ivory  
(RAL 1013)



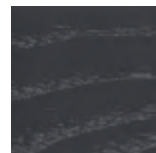
Argilla  
Argilla  
(RAL 7006)



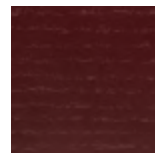
Cioccolato  
Chocolate  
(RAL 8019)



Nero  
Black  
(RAL 9005)



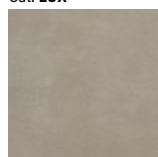
Iron  
Iron  
(RAL 7011)



Granata  
Granata  
(NCS S4050Y90R)

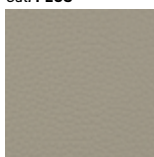
## Pelle | Leather

Cat. LUX



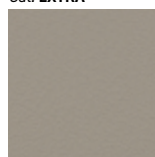
Nabuk

Cat. PLUS



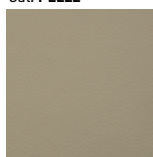
Pelle PLUS

Cat. EXTRA



Pelle EXTRA

Cat. PELLE



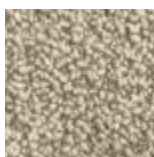
Pelle

## Rivestimento | Cover

Cat. A

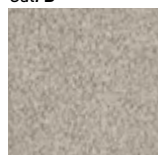


Twist

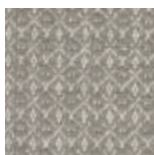


Zante

Cat. B



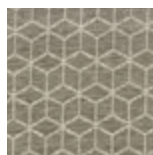
Bouclage



Motley

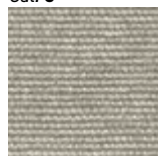


Tammy



Rabat

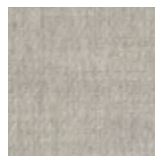
Cat. C



Armam



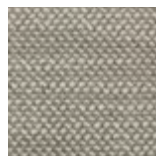
Ikat



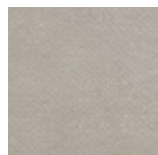
Lint



Loom



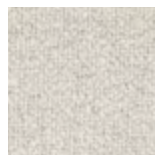
Madras



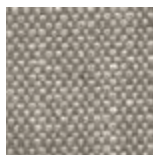
Moleskin



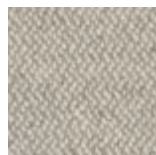
Moran



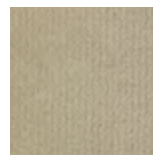
Patch



Silesia

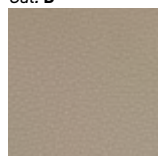


Serge



Velvet

Cat. D



Paros  
eco leather

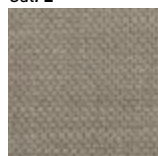


Range

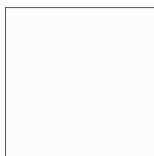


Tress

Cat. E



Dorian



In Bianco/Calico

Cat. COM

Disponibile con tessuto fornito dal cliente.

Available with fabric supplied by the customer.

Verfügbar mit Kundenstoff.

Disponibile avec tissu du client.

Disponibile con tela suministrada por el cliente.